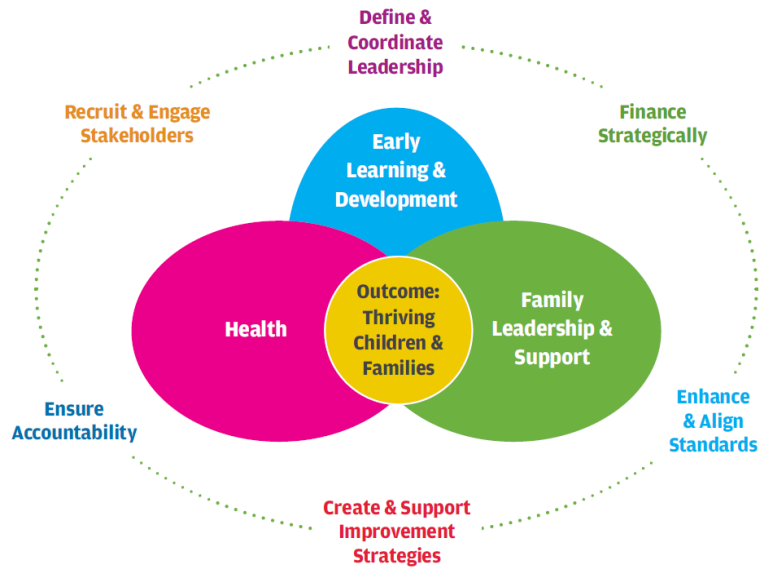


# ECAC • Strawman Goals

The ECAC had a 2-day planning retreat June 13-14, 2016. At this meeting, it was decided that a new subcommittee structure was needed to support goals identified in three areas:

## Early Learning & Development

1. **Every child is reading by grade level by third grade**
  - 1.1. Every child has access to high quality early care and education
  - 1.2. Every child has access to high quality early care and education professionals
  - 1.3. Every child has access to a high quality aligned early learning and development system



<p><b>Child Indicators:</b></p> <ul style="list-style-type: none"> <li>• Revise B-3rd standards into a single document/continuum across all domains - include developmental standards K-3</li> <li>• Assess all domains of learning (using multiple measures)</li> <li>• Increased proficiency &amp; attainment of developmental milestones</li> </ul>	<p><b>Profession Indicators:</b></p> <ul style="list-style-type: none"> <li>• Create a career and credentialing pathway (career ladder/lattice)</li> <li>• The Early Childhood workforce partners and engages effectively with families</li> </ul>	<p><b>Program Indicators:</b></p> <ul style="list-style-type: none"> <li>• Evaluate and revise the Quality Rating and Improvement System</li> <li>• Expand NAEYC accreditation</li> <li>• Expand CLASS Hours (??)</li> <li>• Revise licensing regulations</li> </ul>
--	--	--

## Family Engagement and Support

1. **Families have the community supports they need to thrive and support their children**
2. **Families are actively engaged, leaders and advocates in their child’s development and learning**

<p><b>Family Indicators :</b></p> <ul style="list-style-type: none"> <li>• Review Advocacy Guidebook and Trainings for Parents</li> <li>• Consider implementing PTA family engagement standards</li> </ul>	<p><b>Profession Indicators:</b></p> <ul style="list-style-type: none"> <li>• Review – implement Head Start family engagement standards</li> <li>• Develop new partnerships with K-3 to support parent engagement in the primary years</li> </ul>
--	---

## Health and Mental Health

1. **Every child is healthy and meeting developmental milestones from birth through third grade**

<p><b>Child Indicators:</b></p> <ul style="list-style-type: none"> <li>• Every child receives periodic and comprehensive screenings</li> <li>• Every Child has a medical home</li> <li>• Every Child has access to supportive health services they need</li> </ul>	<p><b>Family Indicators:</b></p> <ul style="list-style-type: none"> <li>• All mothers have access to and are provided prenatal care</li> <li>• All families have access to health insurance and provision of needed health and mental health services</li> <li>• All identified families are provided home-visiting services</li> </ul>	<p><b>Profession/System Indicators:</b></p> <ul style="list-style-type: none"> <li>• Expand Medicaid and participation in Health Exchanges</li> <li>• Expand school and community health clinics providing screening, dental, vision, health and mental health services</li> </ul>
--	---	--