

## Economic Well Being

Financial supports to families: credit counseling, job placement and training services, SNAP, TANF, housing and utility assistance



# NEVADA COMPREHENSIVE EARLY CHILDHOOD SYSTEM



## Health

Programs and agencies supporting Physical Health, Mental Health and Nutritional Health



## Parent Family Supports

Providing a nurturing and supportive environment for their children, parenting education programs, home-visiting programs, family resource centers, child abuse prevention programs

## Early Childhood Education

Quality preschools, child care, and early education programs supporting cognitive and social development.



**CIRCLE GRAPHIC**

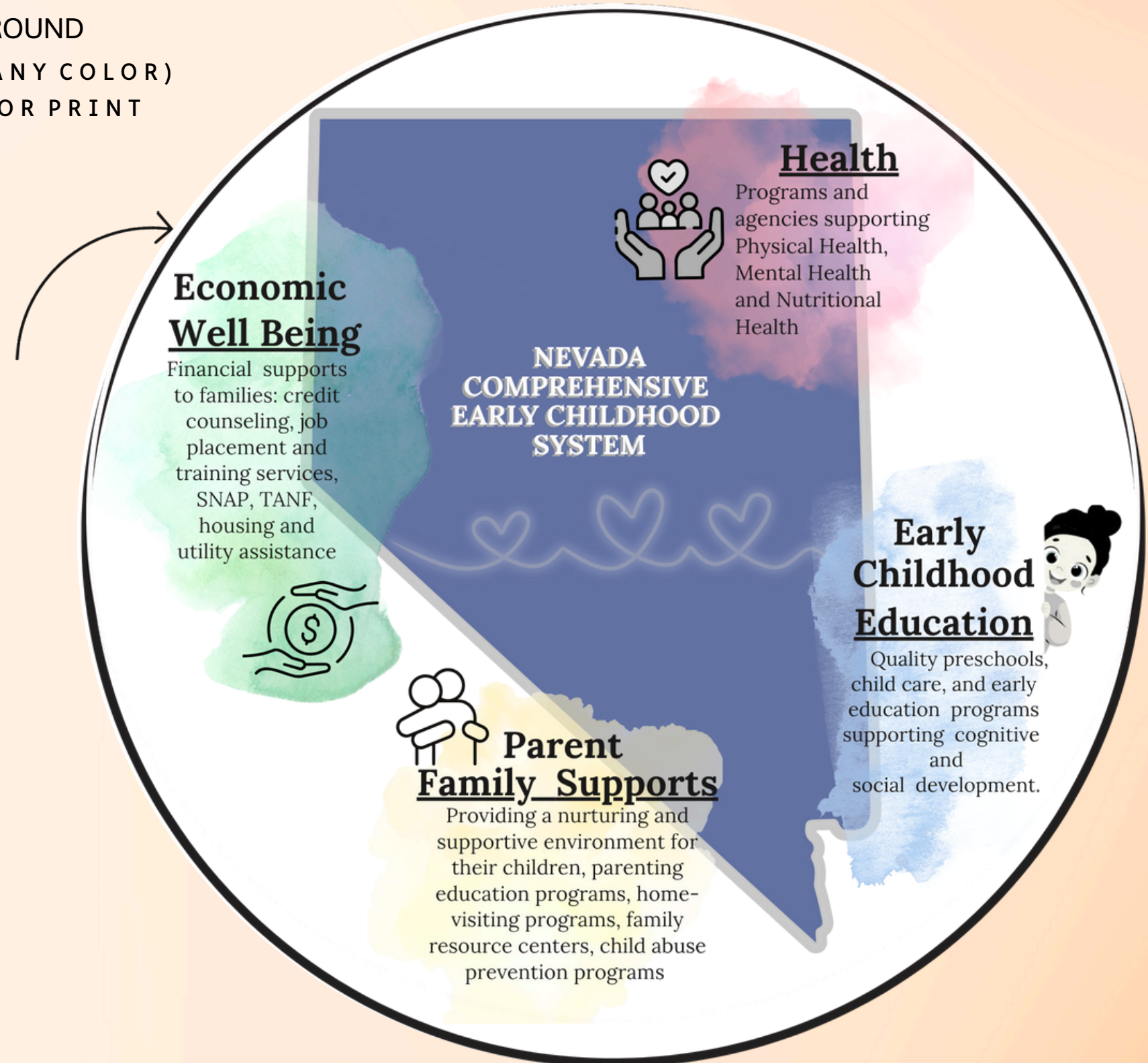
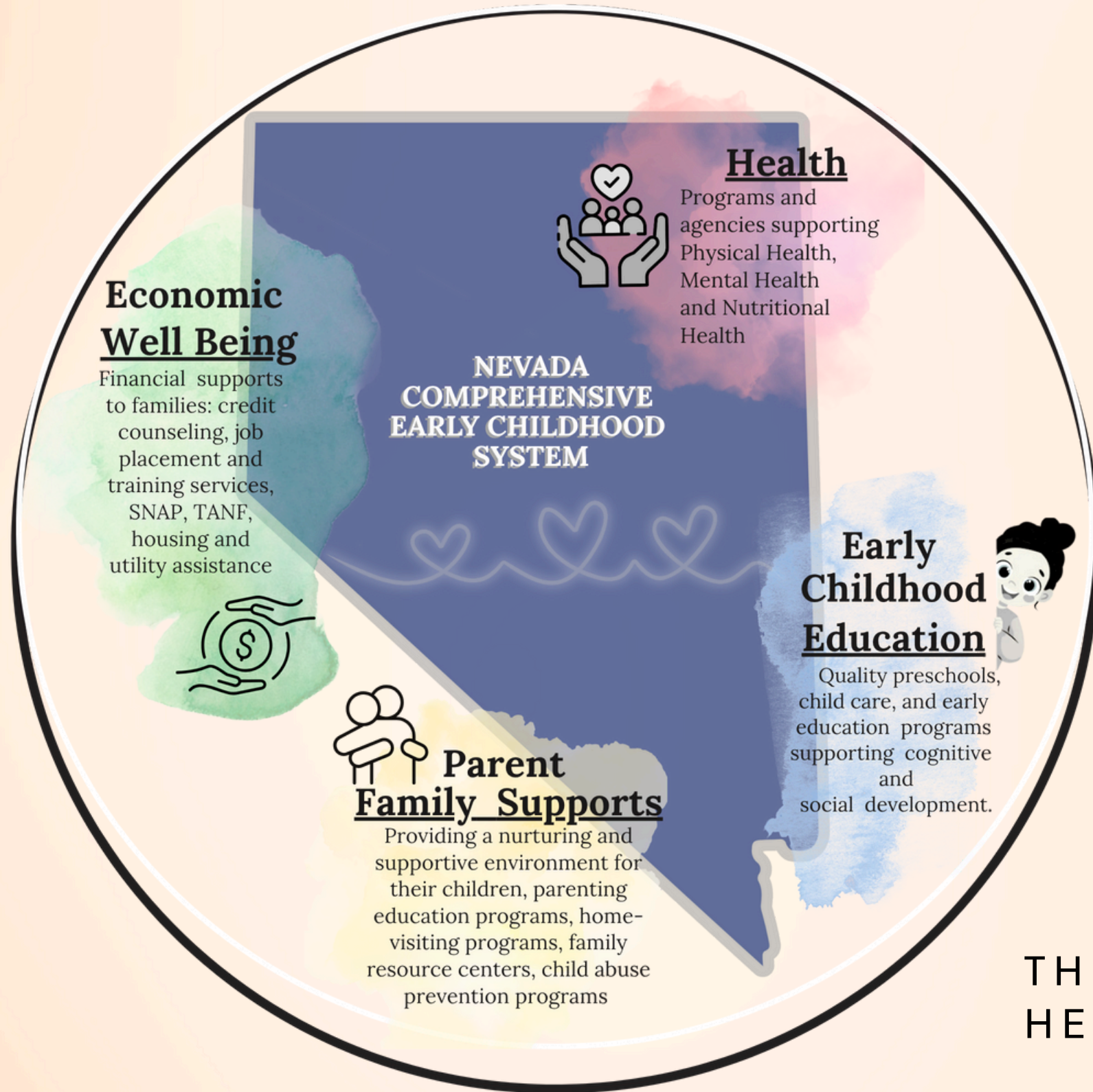
TRANSPARENT BACKGROUND

USE DIGITALLY, OR PRINT

WHITE BACKGROUND

(WE CAN MAKE IT ANY COLOR)

USE DIGITALLY, OR PRINT



THE HEARTS REPRESENT FAMILY & CONNECTIONS  
HEARTS ARE SILVER FOR THE "SILVERSTATE"



# What is a Comprehensive Early Childhood System? A Visual Guide to Understanding the Infographic

Brought to you by the Nevada Early Childhood Advisory Council, Systems Alignment Subcommittee, 2025

An **Early Childhood System**<sup>7</sup> is comprised of all of the programs, services and supports that young children and their families need to enhance optimal health and development. The system includes both direct services, as well as governance and support structures that enable programs and services to be delivered effectively, while a **"Comprehensive Early Childhood System"** is a well-organized network of programs, services, and resources designed to support children prenatally through their early years. This system provides a holistic approach to child development and early education, addressing the various needs and stages of a child's growth.

Comprehensive Early Childhood Systems include the following program elements, known as:

## **Early Childhood Sectors** (as seen on the attached Infographic)

### **Early Care and Education Programs and Services**

Quality preschools, childcare, and early education programs to support cognitive and social development. This includes programs such as Head Start and Early Head Start, Child Care Subsidy, and Nevada Ready2b! PreK, among others.

### **Economic Well Being Programs and Services**

Provides financial support to families, as well as programs that focus on long-term economic stability such as credit counseling, job placement and training services, SNAP, TANF, and housing and utility assistance, among other programs

### **Health, Mental Health and Nutrition Programs and Services**

Access to health and mental health screenings, regular medical check-ups, early intervention services, immunizations, and related health services to ensure both maternal health and infant/child health, includes program access to Medicaid, Nevada Check Up, WIC, NV Immunization Program, Nevada Early Intervention Services and nutritional health programs being accessible.

### **Family Supports Programs and Services**

Assists parents and caregivers in providing a nurturing and supportive environment for their children, including parenting education programs, home-visiting programs, family resource centers, child abuse prevention programs and others.

In addition to the **Early Childhood Sectors**, a **Comprehensive Early Childhood System** also includes **Governance and Support Elements**:

**Leadership and Governance:** key decision-making for programs and services, agencies work together to create access that meets the needs of children & families, includes parents in decision-making process.

**Partner Engagement:** Communication with key partners (gov't agencies, providers from all programs/services, parents, families, ECE Professionals, community leaders) that work together to communicate and align programs and services that meet the needs of children and families.

**Financing and Budgets:** Explores how programs/services are funded, how funding decisions are made, showing how services are delivered, to whom and where.

**Laws, Policies and Standards:** Can be enacted by elected officials, developed by agencies/ programs at federal, state or local levels. Controls which publicly funded programs are developed, funding and location, day to day operations and how programs are managed.

**Technology and Networks:** How information is collected, shared and used to support programs/services, supports a seamless flow of information to reduce administrative burdens for providers and families

**Workforce:** Early childhood is developed and supported to meet the needs of programs and services in the early childhood system.